

Develop Scenario Familiarization: CARANA



Main Teaching Points

- Scenario Defined
- Key Elements
- Welcome to CARANA
- History
- Operating Environment
- Organization and Equipment

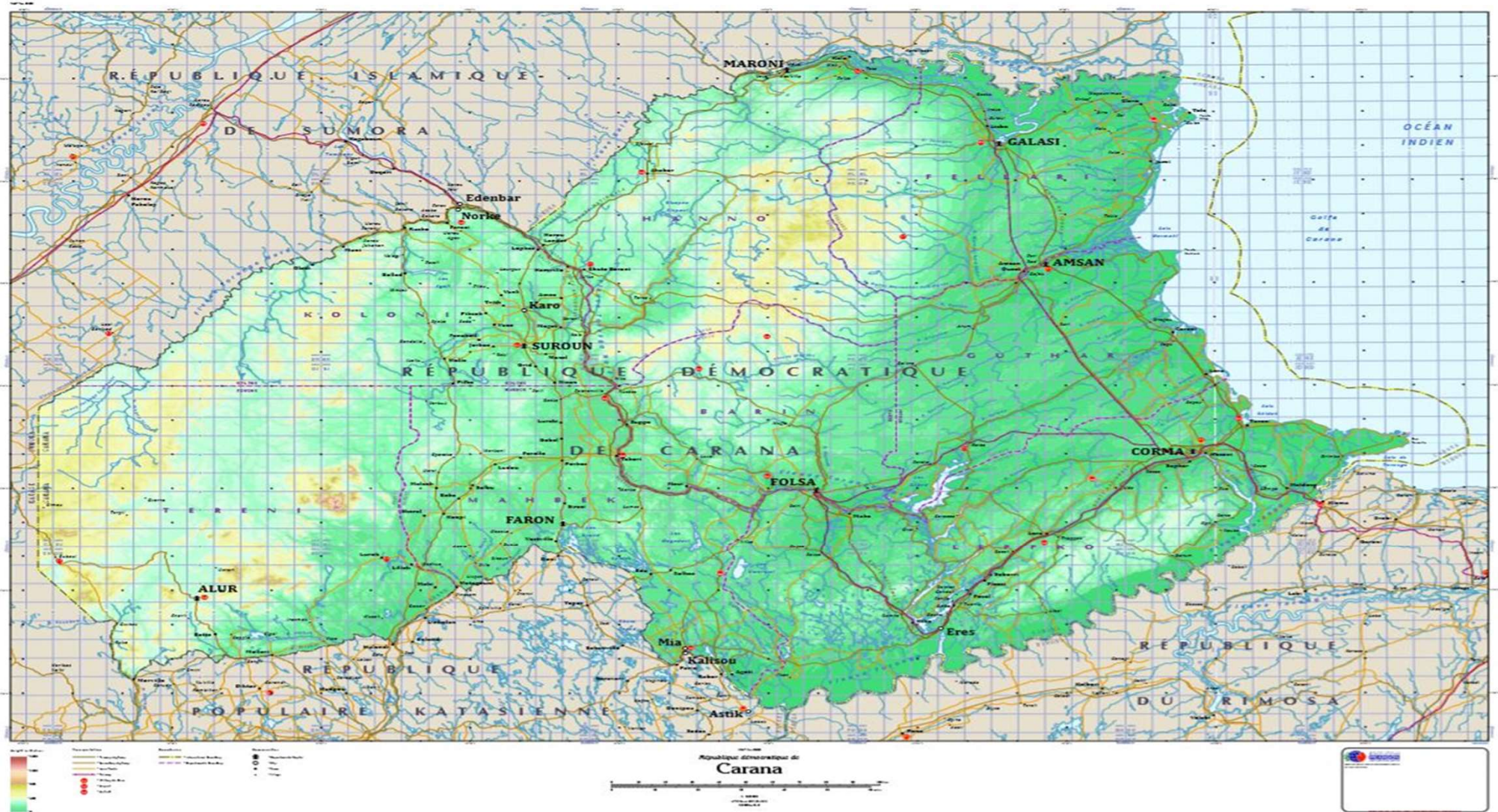




CARANA

East coast of
8th Continent

Scenario CARANA



History



- 1919 - French Colonization
- 1962 Independence – (Communist state)
- 1971 and 75 Coups - Military Falin dominated
- 1986 Elections – Falin tribe dominates
- 1990s – Rebel groups emerge

History 2

Civil War



- Massacres/Atrocities
- Child soldiers
- No faction dominates
- Mouvement patriotique de Carana (MPC) controls WEST
- Independent Combatants du Sud Carana (ICSC) controls SOUTH

History 3

Kalari Peace Agreement (2014)

- CARANA/MPC and ICSC Agreement



History 4

African Union (AU) Mission in CARANA (AMIC 2015)



- Established
(AU Peace and Security
Council Communiqué of the
125th Meeting)

Questions



Climate



- Tropical
- 22–36 degrees Celsius
- 22 degrees Celsius (Nighttime)
- Rainy Season October–December
- (250 mm/month)

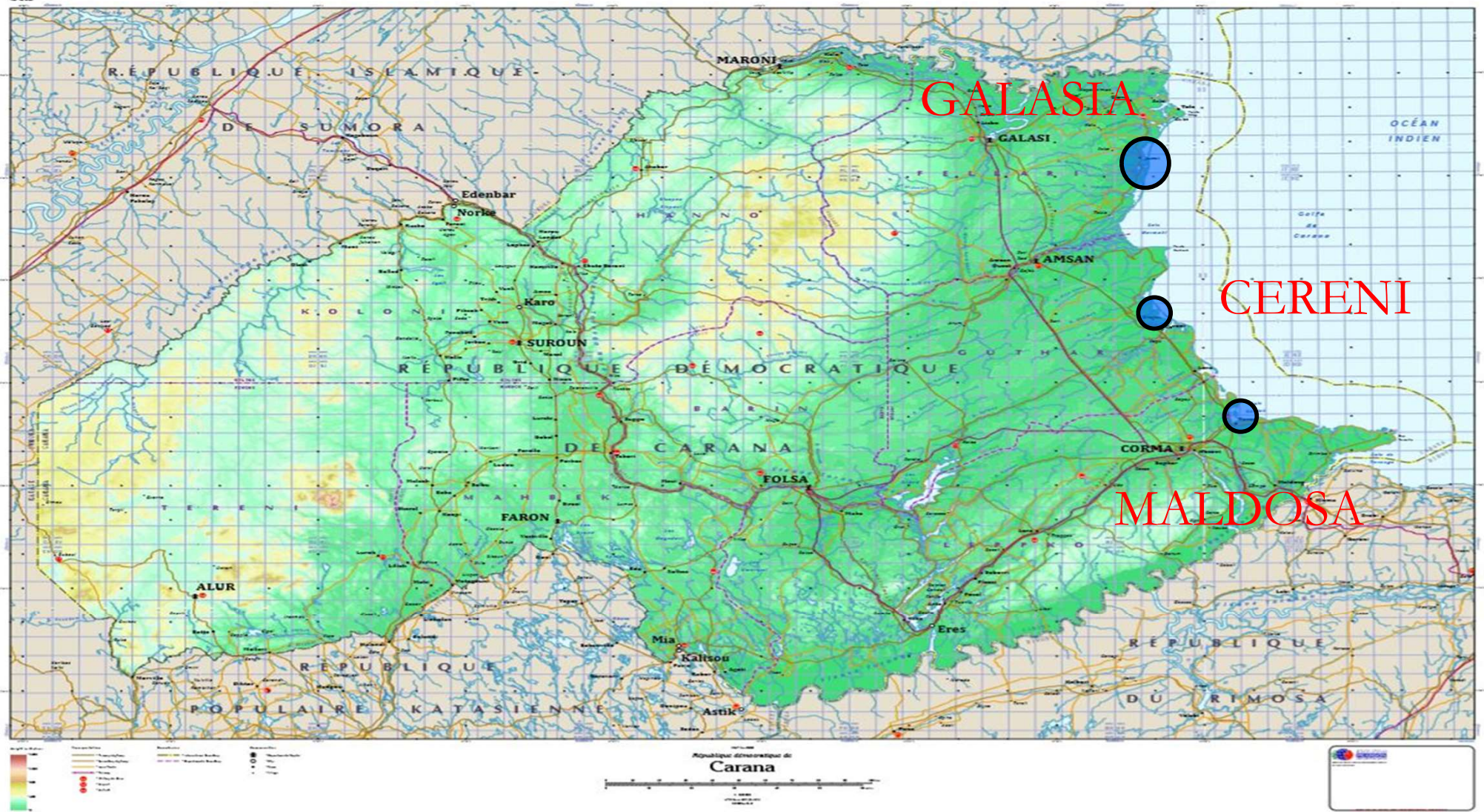
Infrastructure



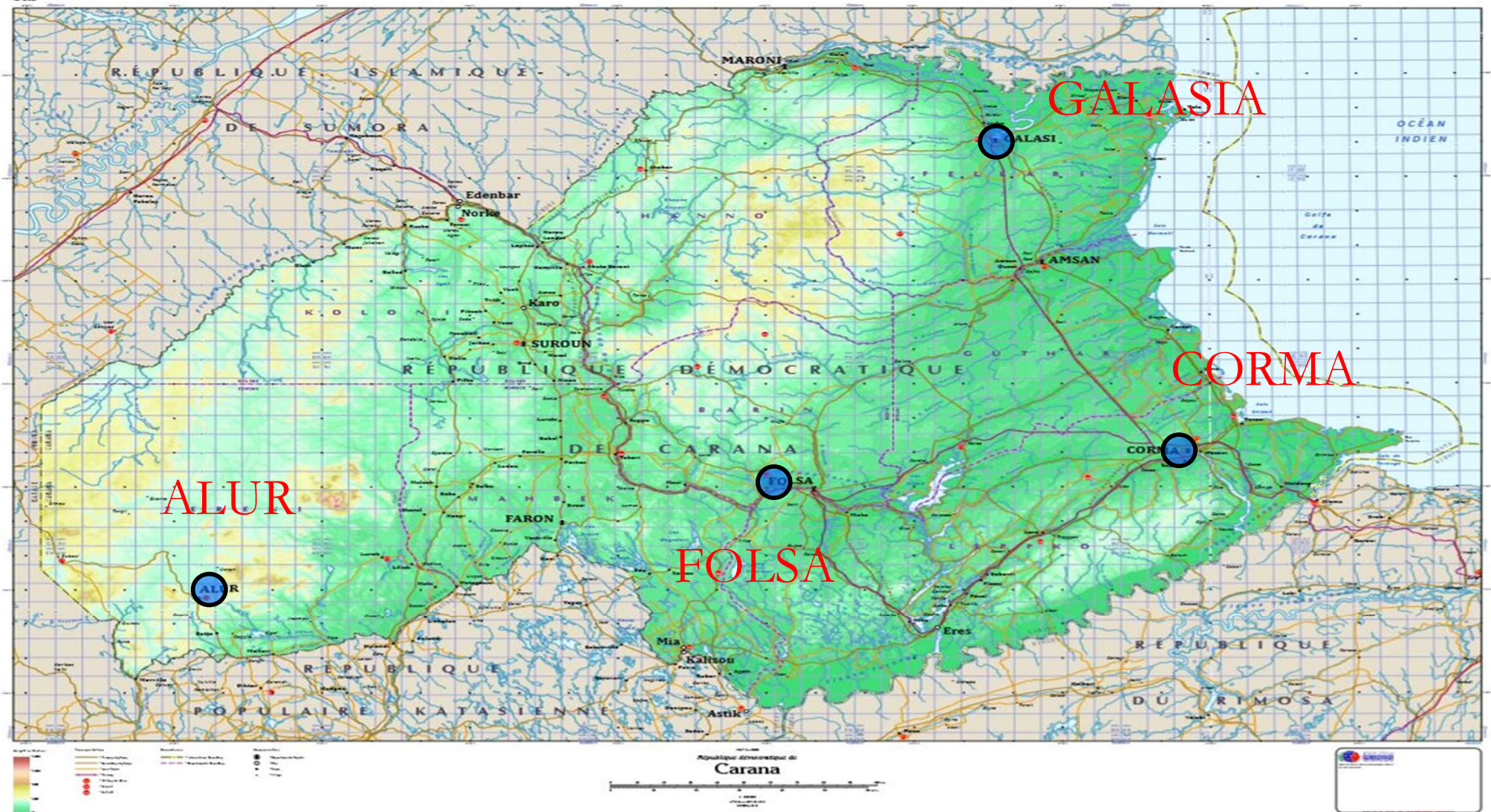
- Telecommunications
- Water
- Waste Management



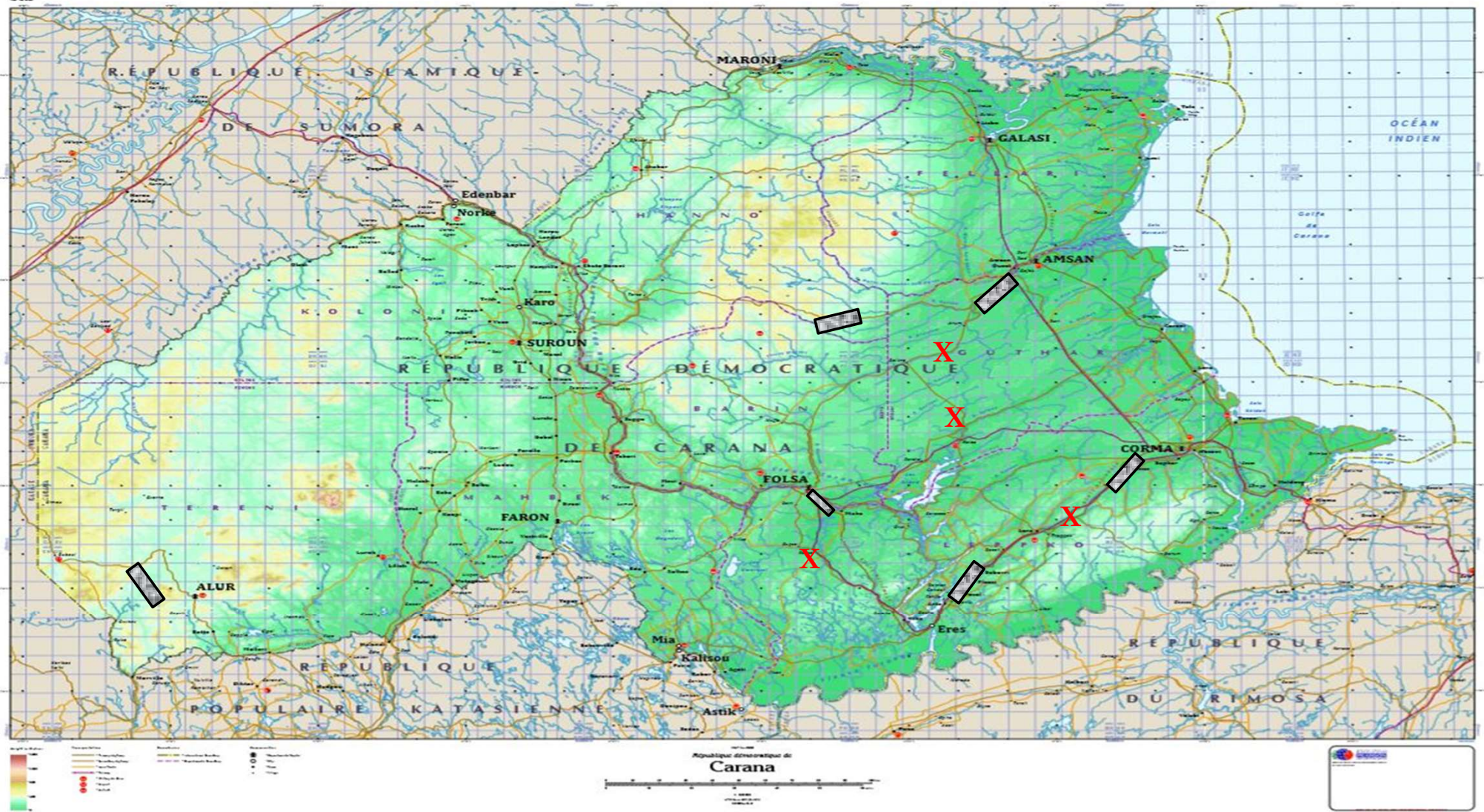
Infrastructure: Ports



Infrastructure: Airfields



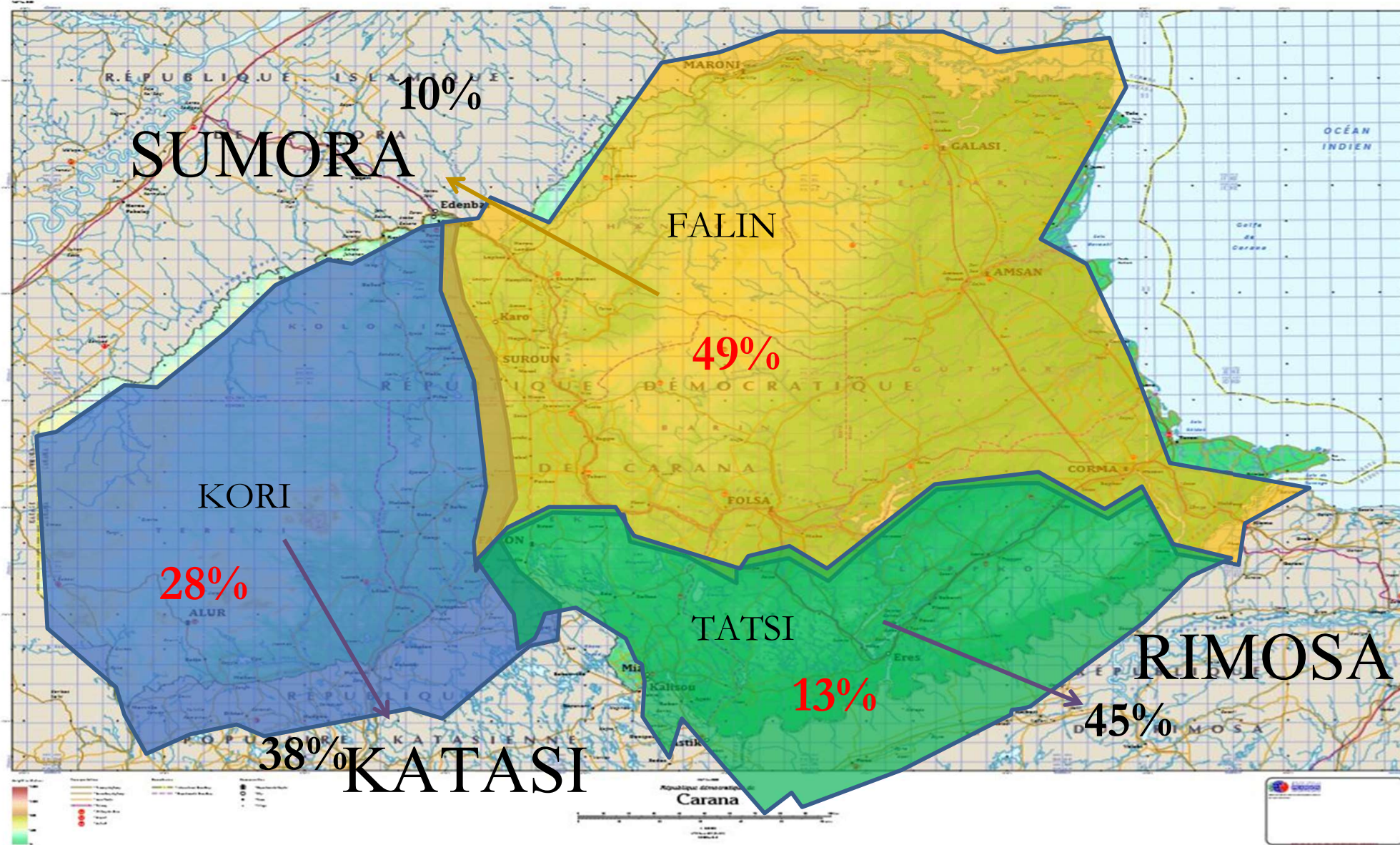
Infrastructure: Roads



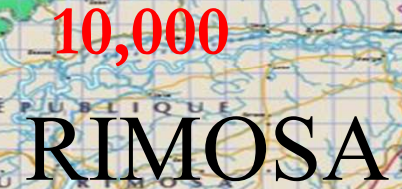
Infrastructure: Railways



Ethnic Distribution



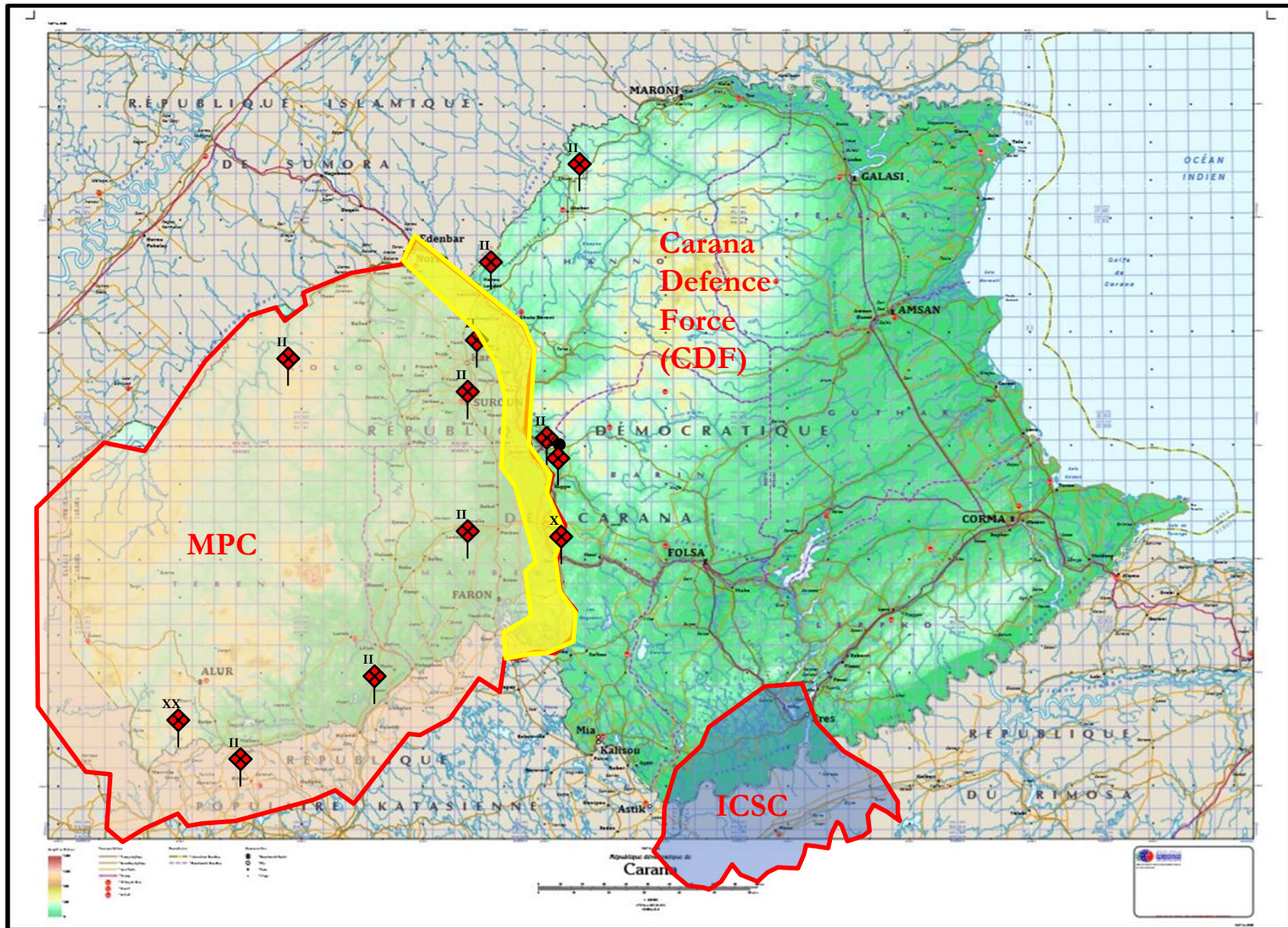
20,000
SUMORA



Questions



Belligerents



Carana Defence Force

CDF

**NORTHERN
AREA
COMMAND**

2nd Mech Bn
6th Inf Bn
1st Abn Bn
1st Arty Bn
1st Engr Bn
11th AAA Bty
11th MP Coy
CDF Band

**WESTERN
AREA
COMMAND**

5th Inf Bn
7th Inf Bn
11th Arty Bty

**CENTRAL AREA
COMMAND**

1st Inf Bn
11th Engr Coy
11th Recce Coy

**SOUTHERN
AREA
COMMAND**

3rd Inf Bn
4th Inf Bn
12th Recce Coy

AIR FORCE

6 x Alpha Jet C
3 x Fokker 100
2 x Cessna 421
4 x F33C
6 x SA330H Puma
5 x SA316 Alouette

NAVY

6 x Suscal A
2 x LC-84



Carana Defence Force



Parti Democratique de Carana (PDC)

Led by Lucien Langata “LL”

- Support from Falin
- Consensus Prime Minister
- Government of National Reconciliation
- Popular Leader



Mouvement patriotique de Carana (MPC)



- Approximately 10,000 fighters
- Based on groups of 750 led by field commander
- Established camps (patrol bases) of 250

Parti patriotique de Carana (PPC)

Led by Jean Mtata

- Kori Tribe
- Broad public support (WEST)
- Assumed government functions



Independent Combatants du Sud Carana (ICSC)



- Approximately 10,000 fighters
 - Based on groups of 750 led by field commander
 - Established camps (patrol bases) of 250
- Led by KWA Bokso

Other Factions

- Warlords
- Teenaged gangs
- Organized Crime



Questions



United Nations Assistance Mission in CARANA



- United Nations Assistance Mission in Carana (UNAC) Strategic End State
- UNAC Strategic Centre of Gravity (CG)
- The Kalari Peace Agreement

UNAC - Mission

Mission: UNAC will deploy in CARANA and commence operations to establish the conditions under which all parties in CARANA observe the terms of the Kalari Treaty, and provide support to the Government of National Reconciliation (GNR) in order to support the process that will lead to the resolution of stability and the installation of a democratically elected government



Strengths

- International backing
- Integrated approach
- Military capability
- Support of most national groups
- Capabilities across spectrums
- National approach to problems
- Communications



UNAC

Weaknesses

- Cohesion
- Will and support of contributing nations
- Competing and parallel chains of command
- Lack of logistic support
- Quality of components



UNAC – Strategic Objectives

UNAC will implement PSC Communiqué (2015) in order to create the conditions for a more secure and stable environment in CARANA



UNAC – Specified Tasks

- Provide security
- Monitor ceasefire
- Establish liaison with all parties military forces
- Assist in Disarmament, Demobilization and Reintegration (DDR)
- Observe and monitor disengagement of military forces
- Facilitate provision of Humanitarian Aid
- Facilitate voluntary return of refugees



UNAC – Specified Tasks

- Assist in monitoring/restructuring police force
- Assist in formation of new armed forces
- Promote understanding of peace process
- Assist in the holding of elections
- Assist in the development of political, economic and social institutions
- Sitting on the Joint Ceasefire Commission (JCC)



UNAC – Implied Tasks

- Deploy AU capabilities
- Support AU and United Nations (UN) activities
- Coordinate, control and command AU elements
- Coordinate with all other parties
- Recover AU capabilities
- Ordered withdrawal at end of mission
- Evacuation in case of failure of CoG



Phase 1: Deployment

- Establish Mission HQ and Main Logistics Base at GALASI
- Secure entry points: sea and airports – GALACI, CORMA/FOLSA/CERINI/TOLE/TUREN
- Create Sectors and Sector HQ across CARANA (1-3)
- Deployment of AU elements
- Establish humanitarian corridors
- Establish liaison with all parties and AU/UN agencies
- Establish JCC
- Monitor and verify ceasefire
- Conduct public information campaign

COMPLETE

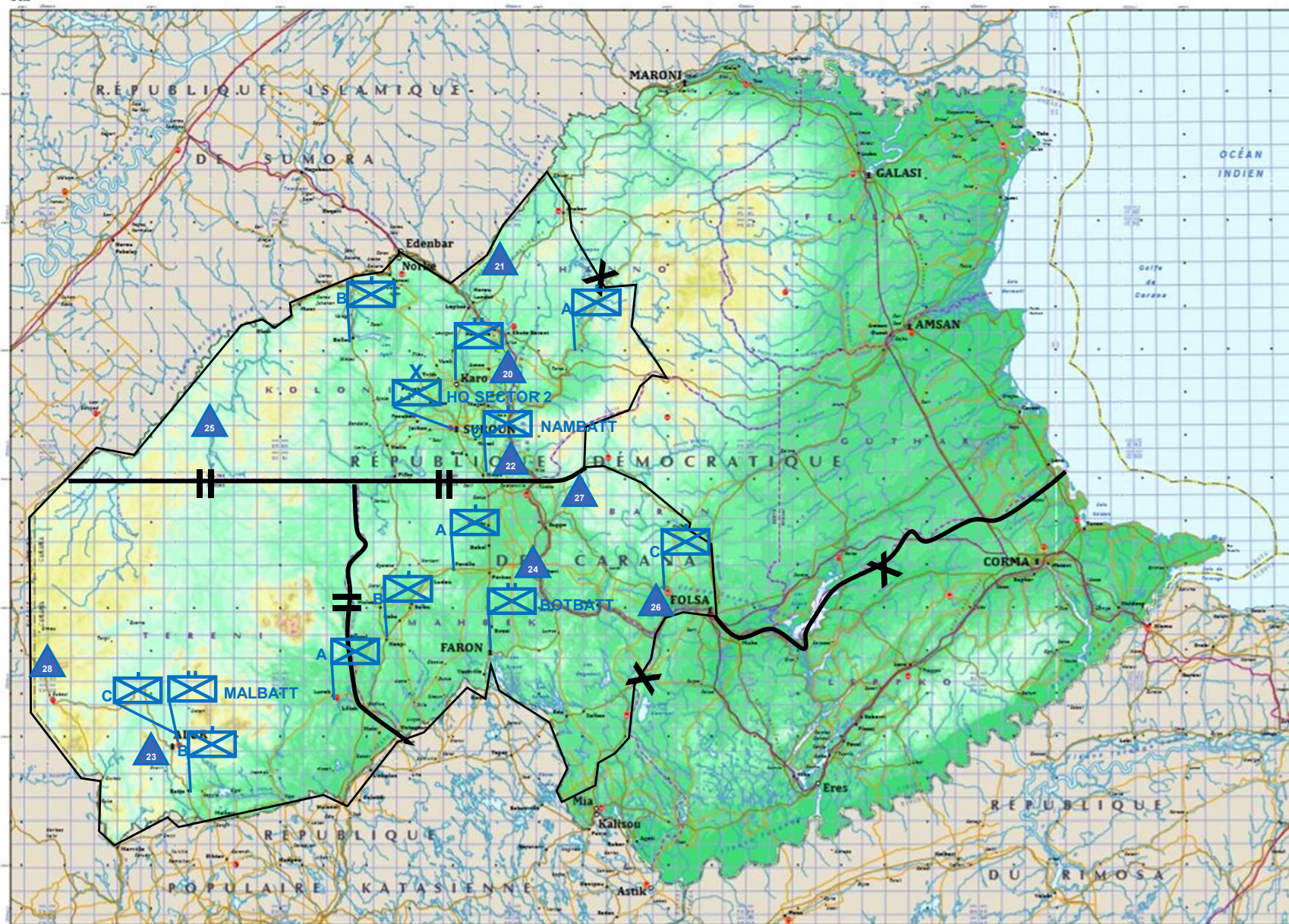


Phase 2: Implementation

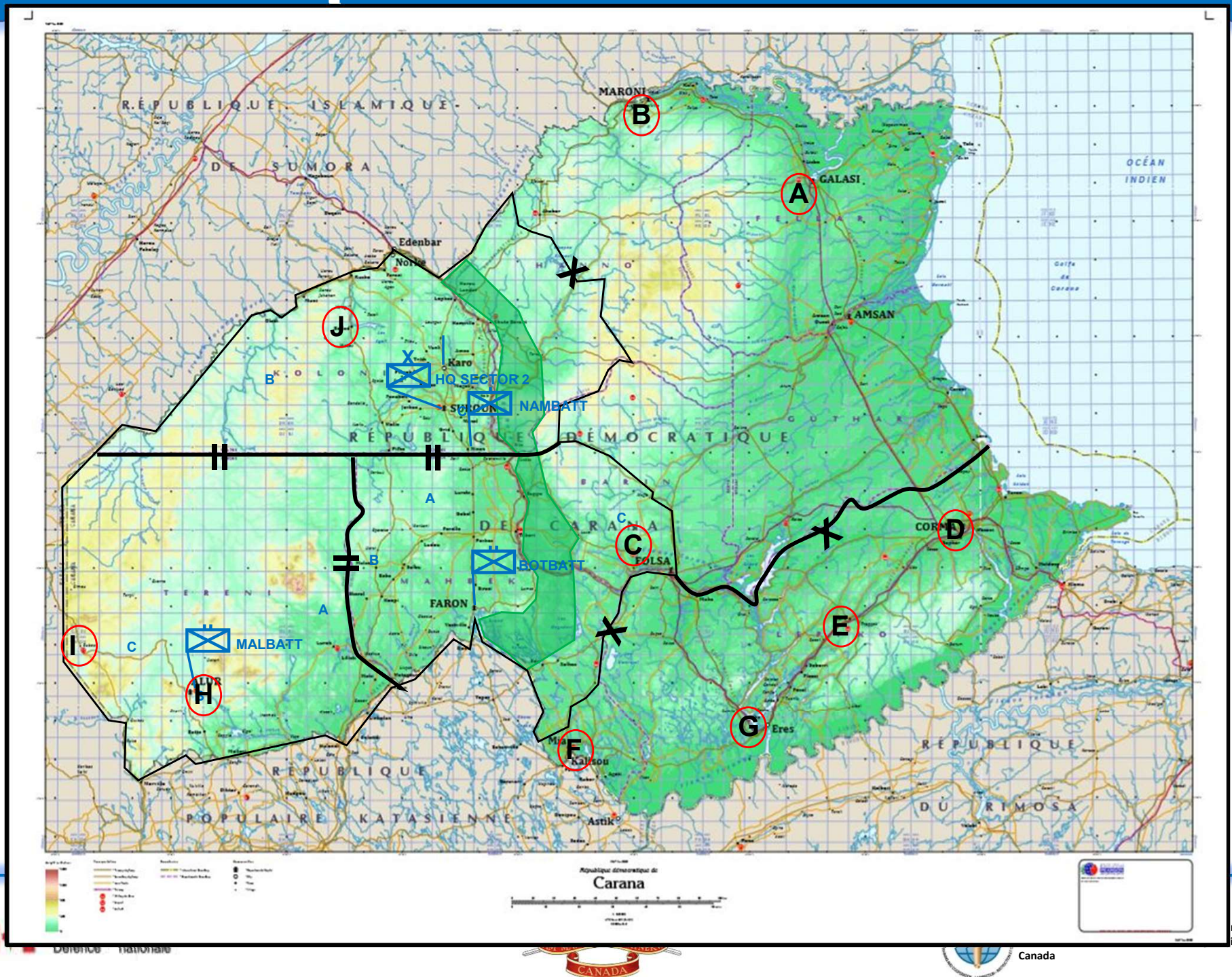
- Facilitate return of refugees and internally displaced persons (IDPs)
- Establish cantonments
- Monitor **HR** and police activity
- Start DDR
- Start preparation for elections
- Facilitate creation of Legal structure



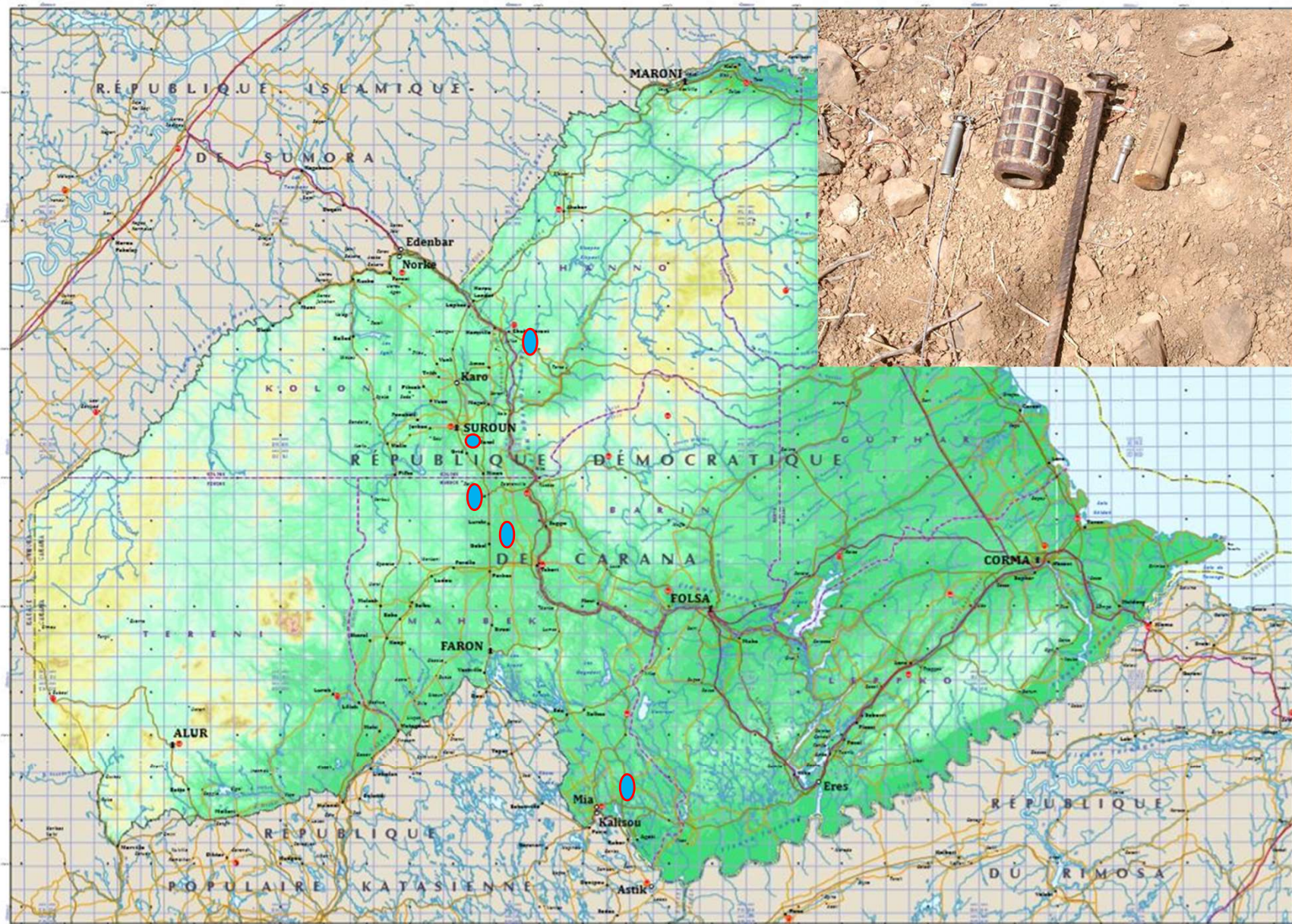
Brigade/Sector Boundaries



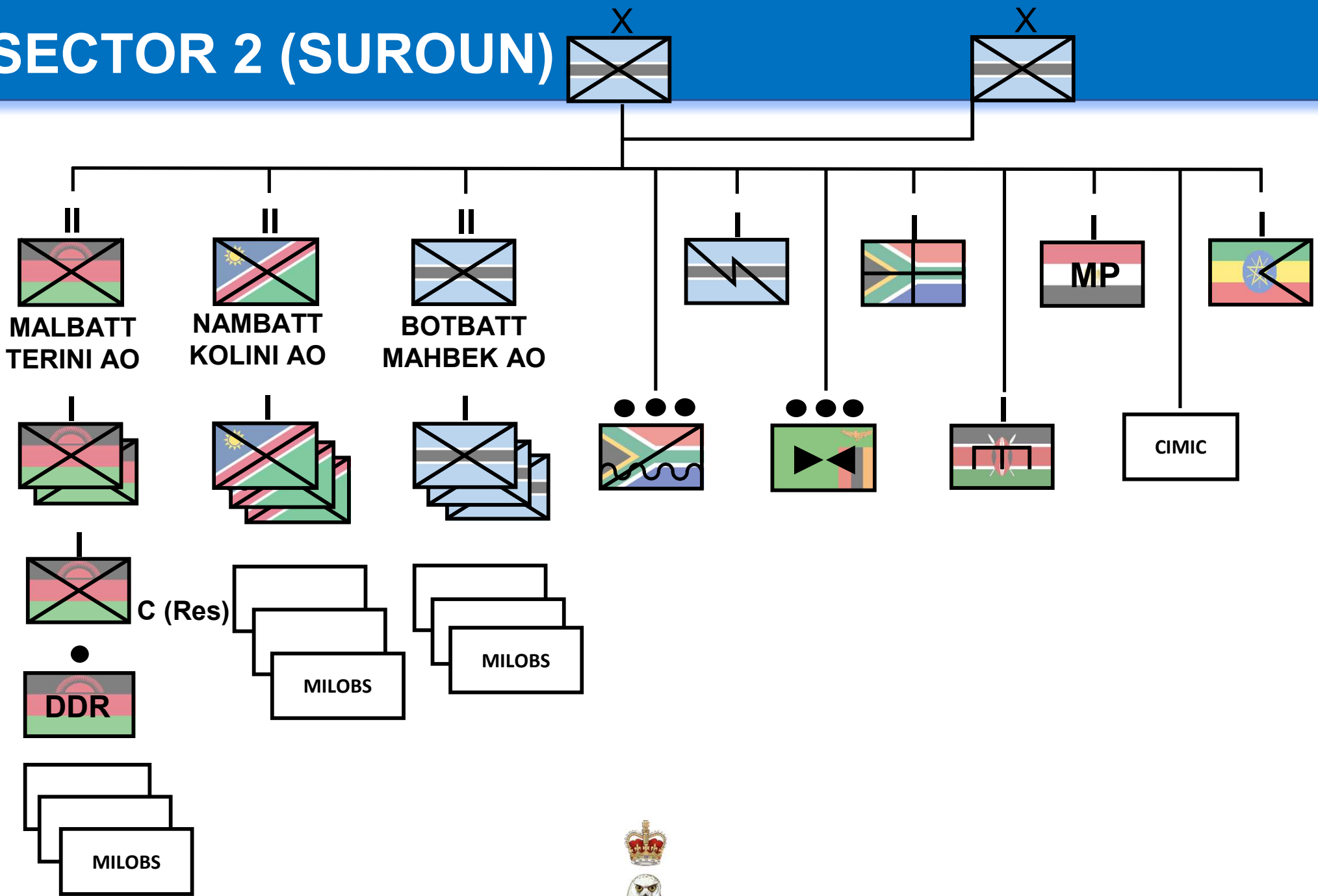
Proposed Cantonment



Landmines



SECTOR 2 (SUROUN)



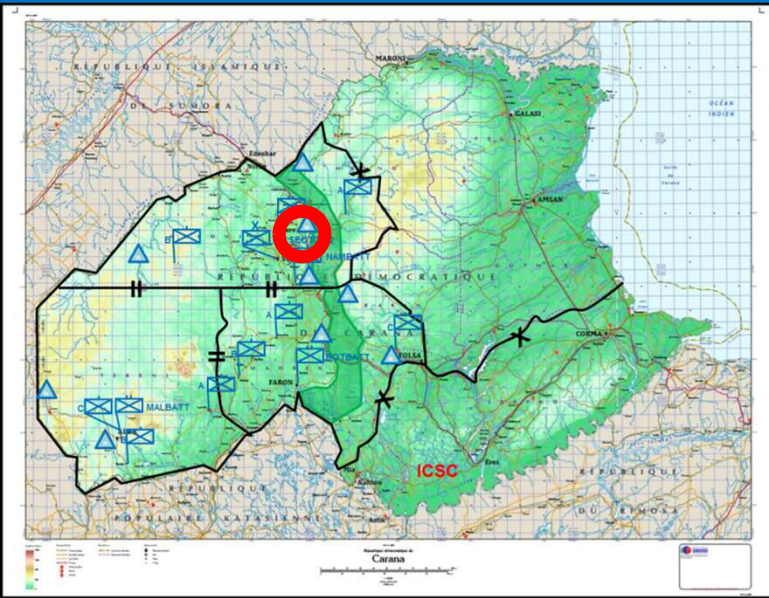
-



Sector 2 Headquarters

Suroun

- Kenyan Engineer Squadron
- Ethiopian Logistics Company
- Egyptian Military Police Company



The map displays the Republic of Chad with various military bases marked by blue symbols and ICSC locations marked by red symbols. A red circle highlights a specific base in the western part of the country. Neighboring countries shown include Sudan, Libya, Cameroon, and Nigeria. Major cities like N'Djamena and Faya are labeled. The map also shows the Mediterranean Sea and the Gulf of Guinea. A legend at the bottom left provides details on the symbols used, including military bases and ICSC locations. The map is titled 'République du Tchad' and includes a scale bar and a north arrow.

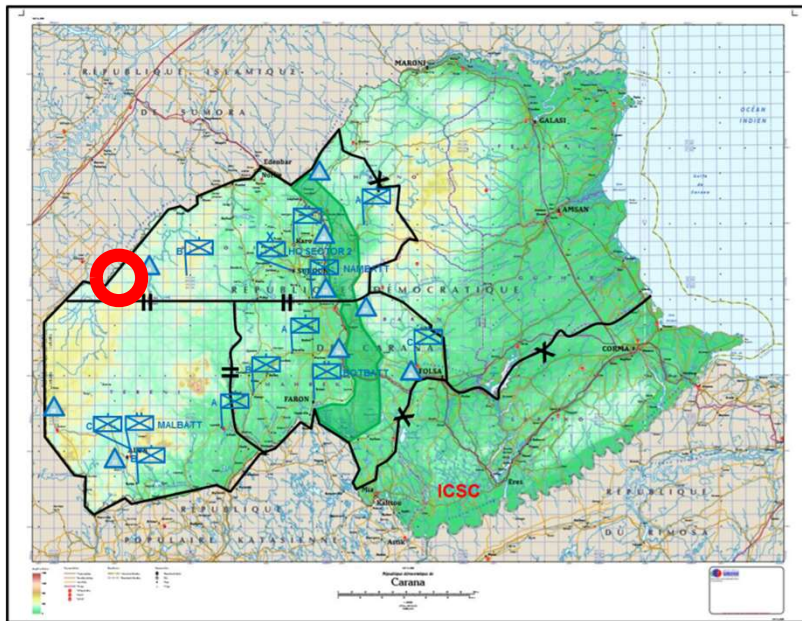
- MALBATT HQ
- HQ PI
- C (Reserve) Coy
- DDR Team



TERINI AO

Lurok

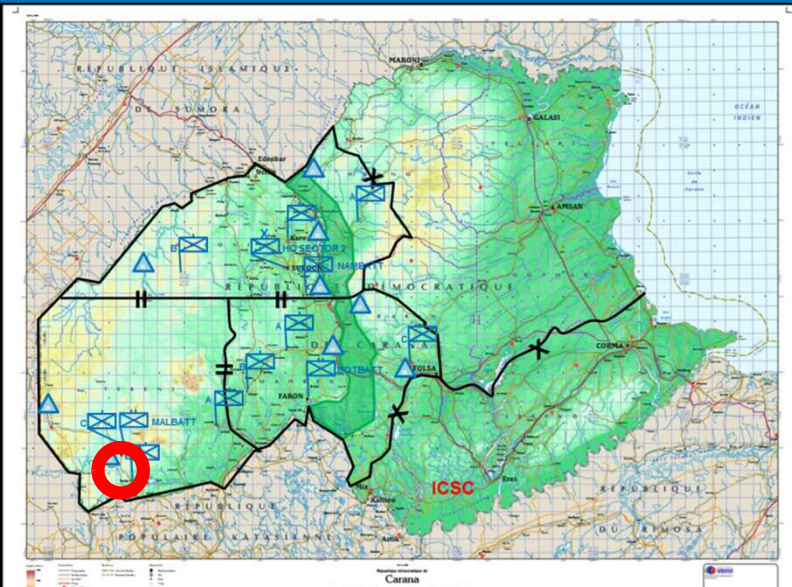
- A Coy MALBATT



TERINI AO

BATTO

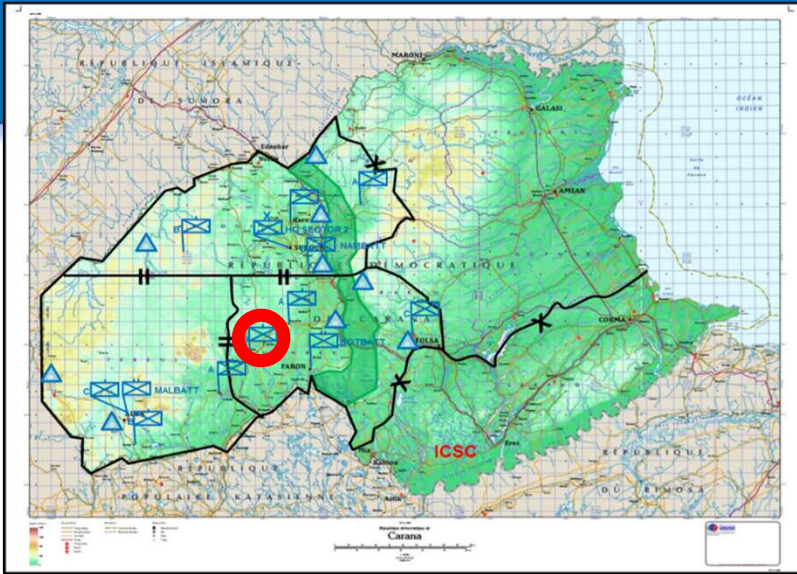
- B Coy MALBATT
- Fuel Dump



KOLONI AO

Karo

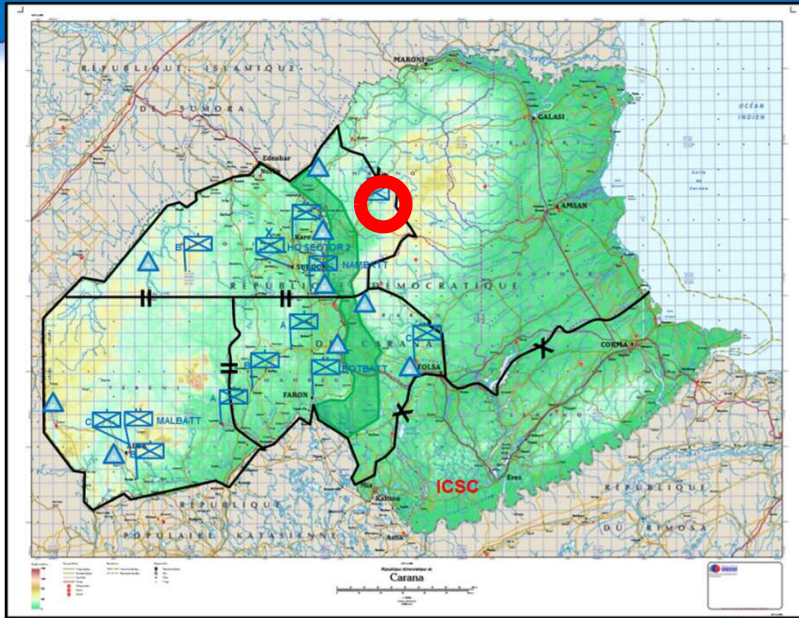
- NAMBATT HQ
- HQ Coy



KOLONI AO

TORTA

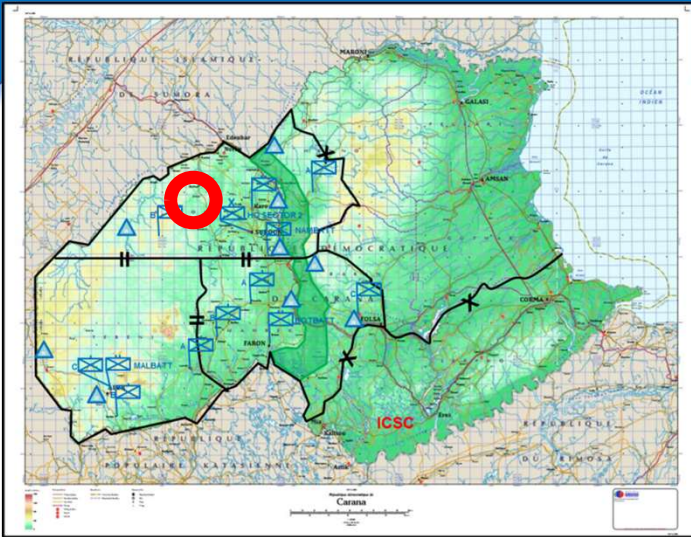
- A Coy NAMBATT



KOLONI AO

BALLAD

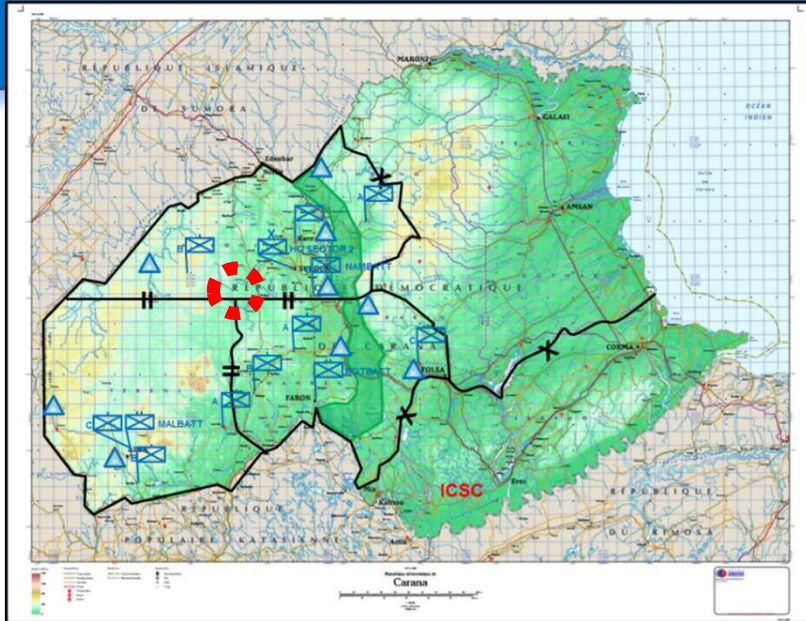
- B Coy NAMBATT
- Fuel Dump



KOLONI AO

NIXAN

- C Coy NAMBATT



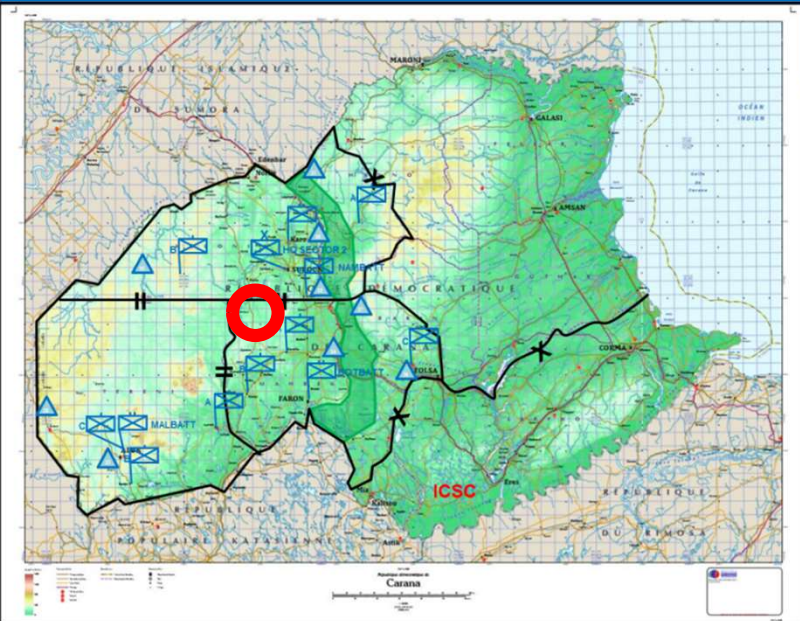
- BOTBATT HQ
- HQ Coy



MAHBEK AO

Perkes

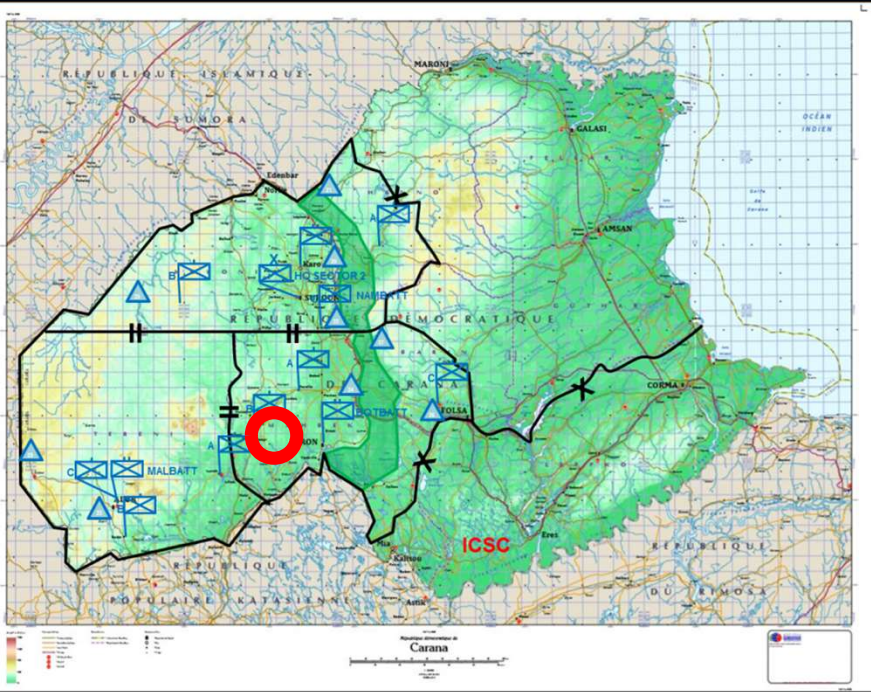
- A Coy BOTBATT



MAHBEK AO

KOEPI

- B Coy BOTBATT



MAHBEK AO

MAGATAKAK Dam

- C Coy
- SA MRP HQ

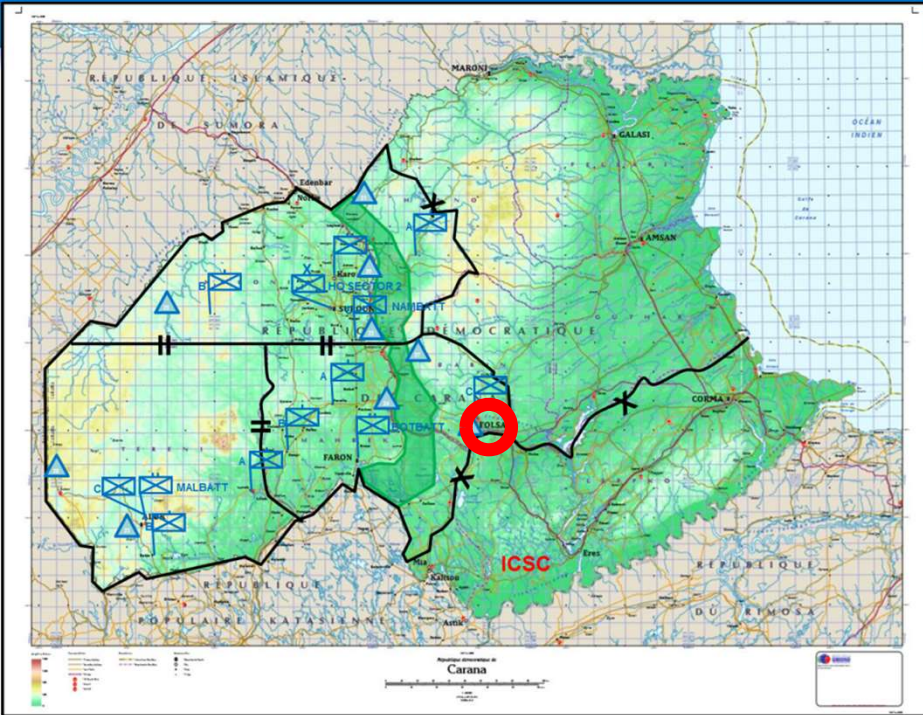


Photo © Danie van den Berg 2007



Mil Experts on Mission

TERINI AO

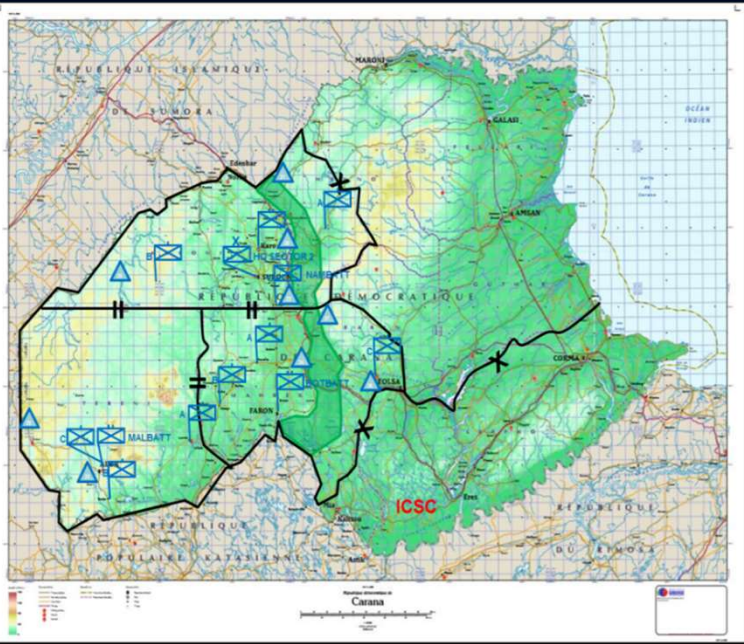
- 3 Teams

KOLONI AO

- 3 Teams

MAHBEK AO

- 3 Teams



Supporting Documents

- CARANA Country Study (Long Version)
- United Nations Security Council Resolution (UNSCR) 1544 UNAC
- CARANA Map 500K
- Mission Concept of Operations (CONOPS)
- Sector 2 Military Force Information
- Sector 2 Operation Order



CARANA Summary

- KOLONI, TERINI and MAHBEK Provinces
- We are Sector 2 HQ
- Detailed information packs to be distributed
- Read up and get familiar with the scenario
- Operational Planning Process cycles will be based on CARANA and Sector 2



Questions

